

# GMT STUDIOS



**GMT** 

# GMT STUDIOS

NEWLY REMODELED OFFICE AND PRODUCTION SUPPORT SPACE,  
TWO STANDING SETS AND A TEAM DEDICATED TO YOUR SUCCESSFUL PRODUCTION.

310.649.3733 fax 310.216.0056 website [gmtstudios.com](http://gmtstudios.com)



Terry Moretti  
Vice President  
and General  
Manager of  
GMT Studios



# THE GMT MISSION STATEMENT

OUR ENTIRE STAFF IS COMMITTED TO MEET OR EXCEED OUR CLIENT'S EXPECTATIONS AND TO SUPPORT EVERY PRODUCTION LIKE IT WAS OUR VERY OWN IN A FRIENDLY AND POSITIVE ATMOSPHERE THEREIN PROVIDING OUR CUSTOMERS WITH THE GREATEST SERVICE AND VALUE FOR THEIR MONEY.

## \* GMT STUDIOS LOCATION

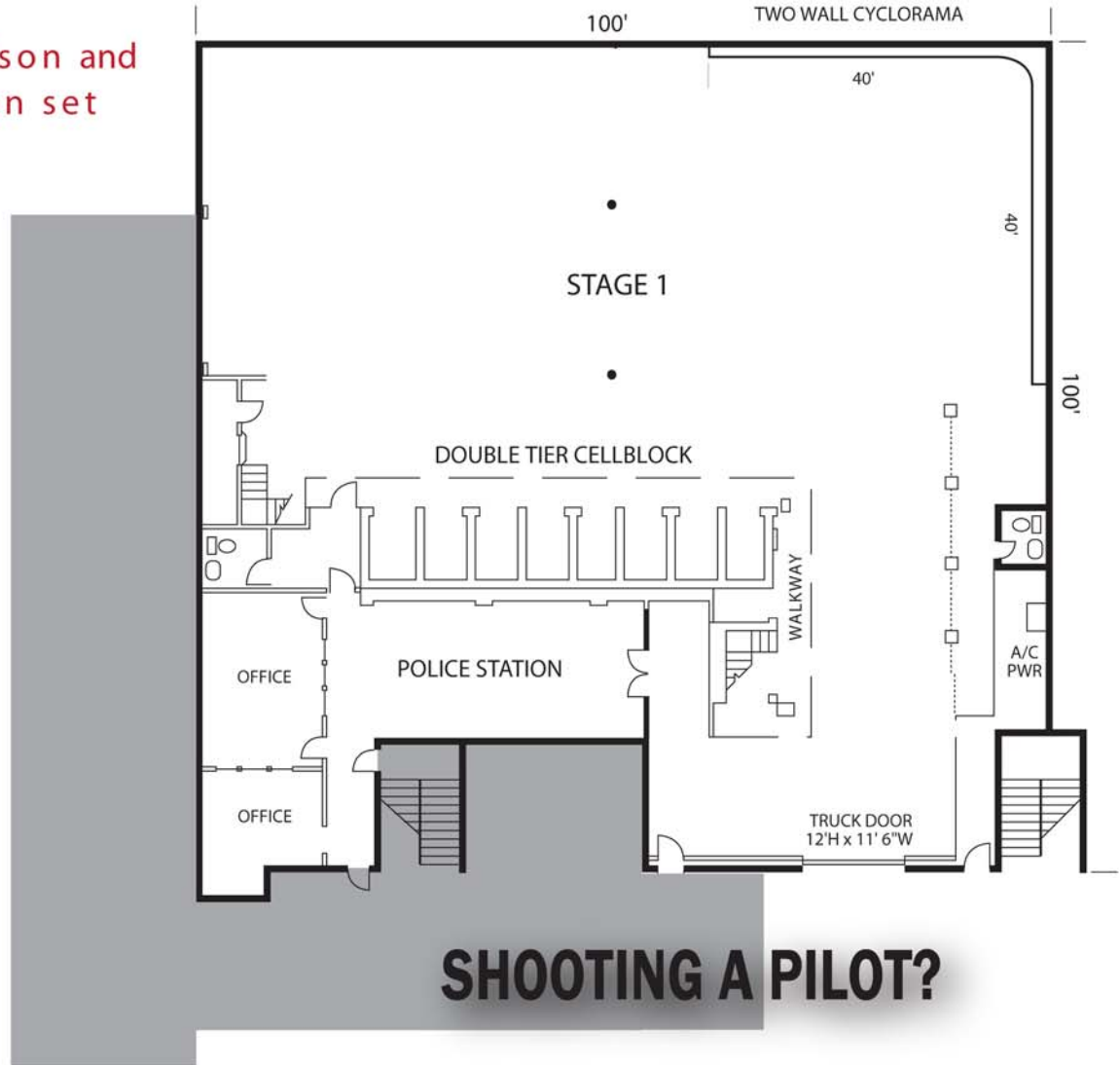
5751 Buckingham Parkway, Culver City, CA 90230



**“We support your production like it was ours.”**

standing prison and  
police station set

# stage 1



## SHOOTING A PILOT?

stage 1 100' x 100' x 18'-25'

stage 2 50' x 80' x 16-18'

stage 3 96' x 93' x 23'

stage 4 70' x 70' x 24'

stage 5 30' x 30' x 16' **NEW**

stage 6 112' x 88' x 24"

stage 7 116' x 96' x 22-25'

- 10,000 square feet total
- Two wall Cyclorama (40' x 40' x 18' grid)
- Fully functional two story prison set
- City police station/institutional set
- Moveable walls
- 1200 amps of stage power (additional power available)
- Electronic phone system
- Drive-in truck door 12' high x 11'6" wide
- 20 reserved parking spaces
- Production offices with Digital phone system
- Wireless Internet

- 50'x 80'x 17' grid
- 4,000 square feet total
- Three wall Cyclorama (40'x 46'x 44'x 17')
- 600 amps of stage power (additional power available)
- Make-up/dressing room
- Production offices (air conditioned)
- Digital phone system
- Drive-in truck door 10' high x 12' wide
- 14 reserved parking spaces
- Wireless Internet

stage 1 100' x 100' x 18' - 25'

**stage 2 50' x 80' x 16-18'**

stage 3 96' x 93' x 23'

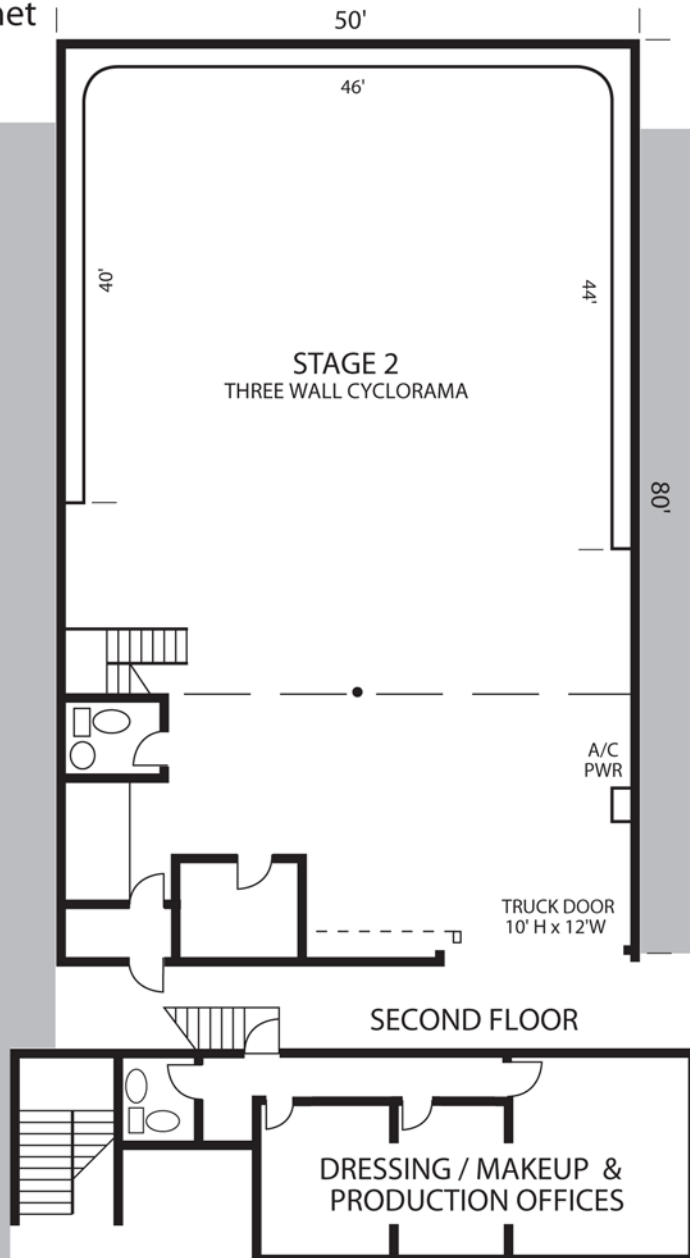
stage 4 70' x 70' x 24'

stage 5 30' x 30' x 16' **NEW**

stage 6 112' x 88' x 24"

stage 7 116'x 96'x 22-25'

# stage 2



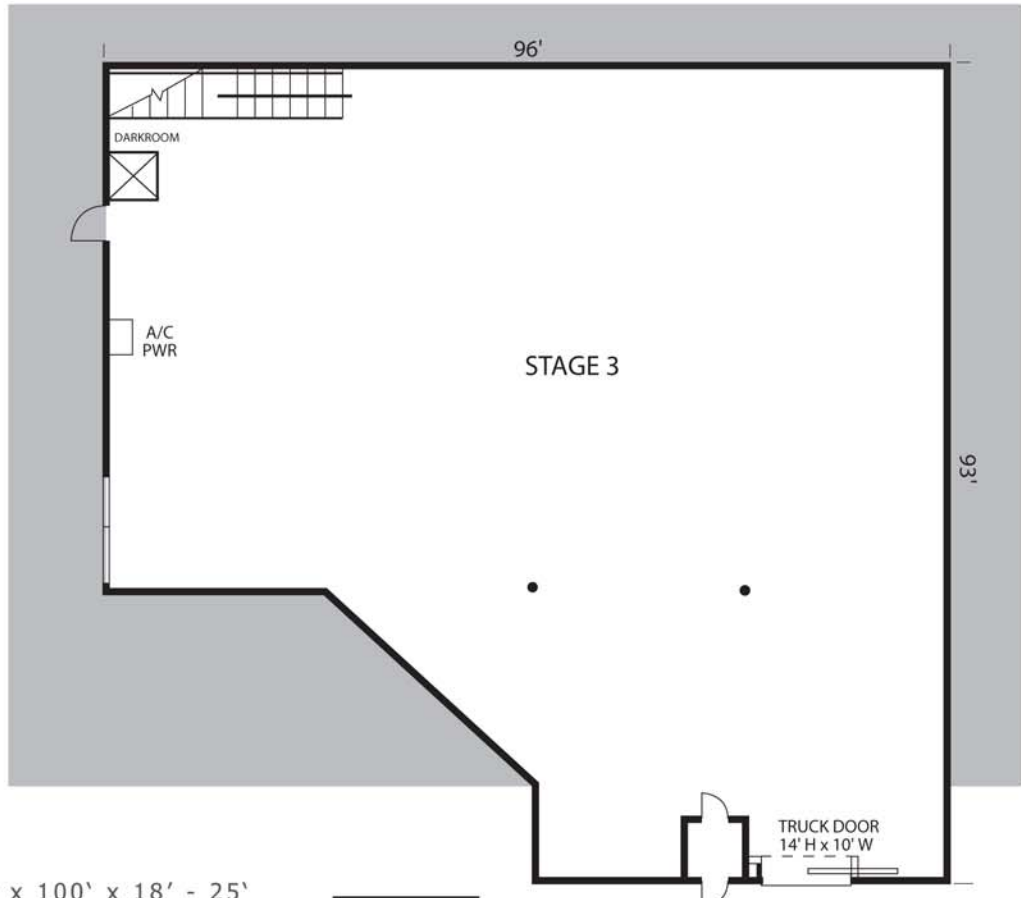
**1,600 SQUARE FEET OF  
PRODUCTION OFFICE  
SPACE ALSO AVAILABLE**

*“It’s easier to reach for the stars when you’re at the only studio on a hill.”*

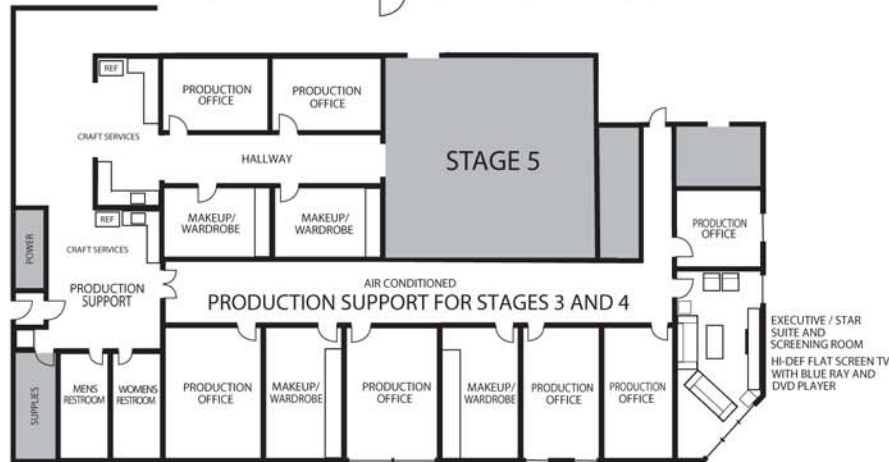
**FEATURE FILM  
PRODUCTION**

- 96'x 93'x 23' grid
- 8,000 square feet total
- 2400 amps (additional power available)
- Make-up/dressing room (air conditioned)
- Production offices (air conditioned)
- Digital phone system / Wireless Internet
- Drive-in truck door 14' high x 10' wide
- 24 reserved parking spaces

stage 3



- stage 1 100' x 100' x 18' - 25'
- stage 2 50' x 80' x 16-18'
- stage 3 96' x 93' x 23'**
- stage 4 70' x 70' x 24'
- stage 5 30' x 30' x 16' **NEW**
- stage 6 112' x 88 x 24"
- stage 7 116'x 96'x 22-25'



**“Great customer service is our only objective.”**

- 70'x 70'x 24' grid
- 4,900 square feet total
- Two wall Cyclorama 44' x 37' x 24'
- 24' x 100' black curtain (optional)
- 1200 amps of stage power (additional power available)
- Make-up/dressing room (air conditioned)
- Production offices (air conditioned)
- Electronic phone system
- Loading dock with drive - in ramp  
12' high x 18' wide
- 22 reserved parking spaces
- Wireless Internet and Digital Phone System

stage 1 100' x 100' x 18' - 25'

stage 2 50' x 80' x 16-18'

stage 3 96' x 93' x 23'

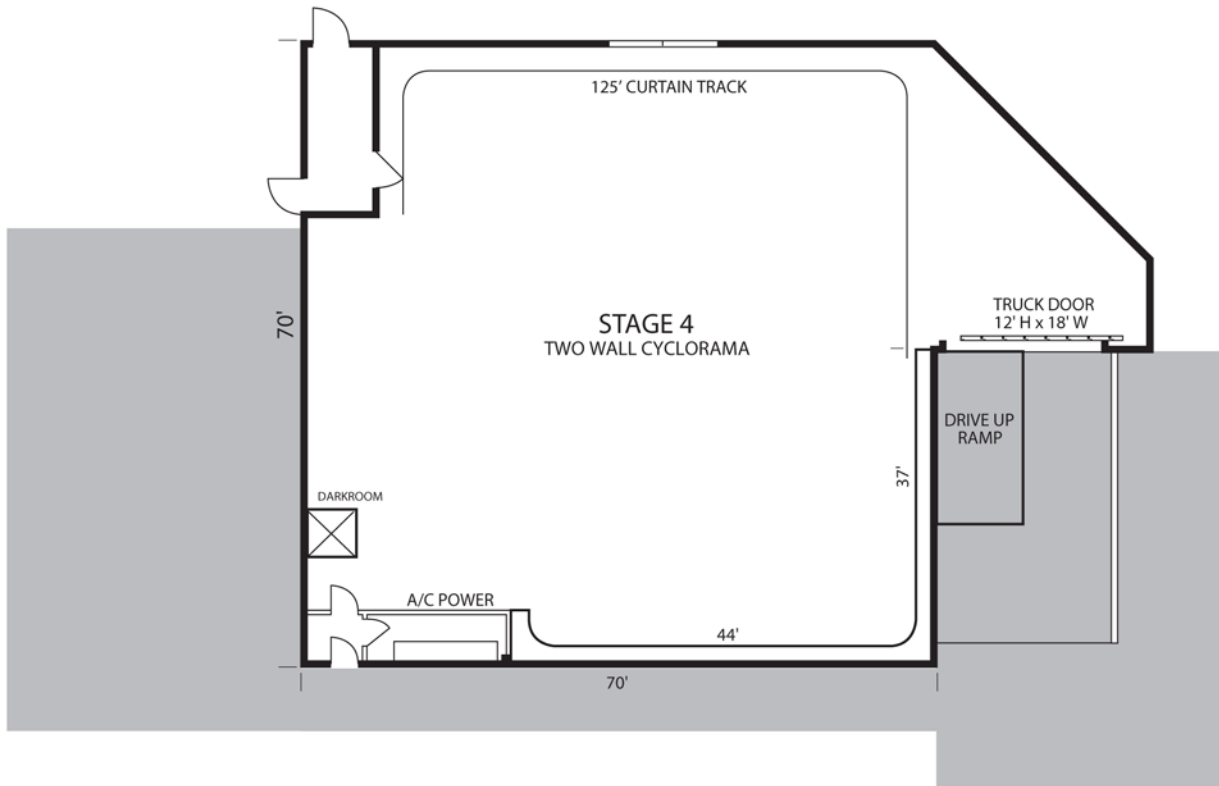
**stage 4 70' x 70' x 24'**

stage 5 30' x 30' x 16' **NEW**

stage 6 112' x 88' x 24"

stage 7 116'x 96'x 22-25'

# stage 4



**NEW PRODUCTION OFFICES**

“Our new stage 5 is perfect for table top or insert shots.”

# stage 5

- stage 1 100' x 100' x 18' - 25'

---

- stage 2 50' x 80' x 16-18'

---

- stage 3 96' x 93' x 23'

---

- stage 4 70' x 70' x 24'

---

- stage 5 30' x 30' x 16' NEW**

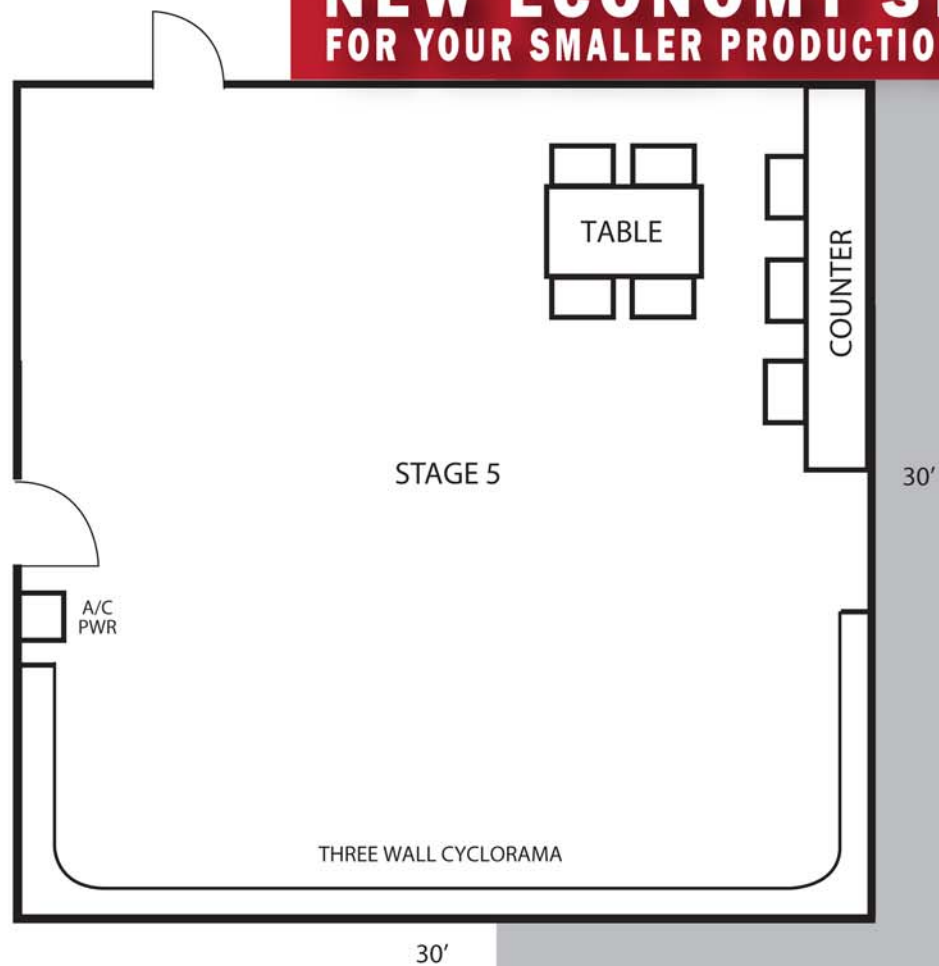
---

- stage 6 112' x 88' x 24"

---

- stage 7 116'x 96'x 22-25'

**NEW ECONOMY STAGE  
FOR YOUR SMALLER PRODUCTION NEEDS**



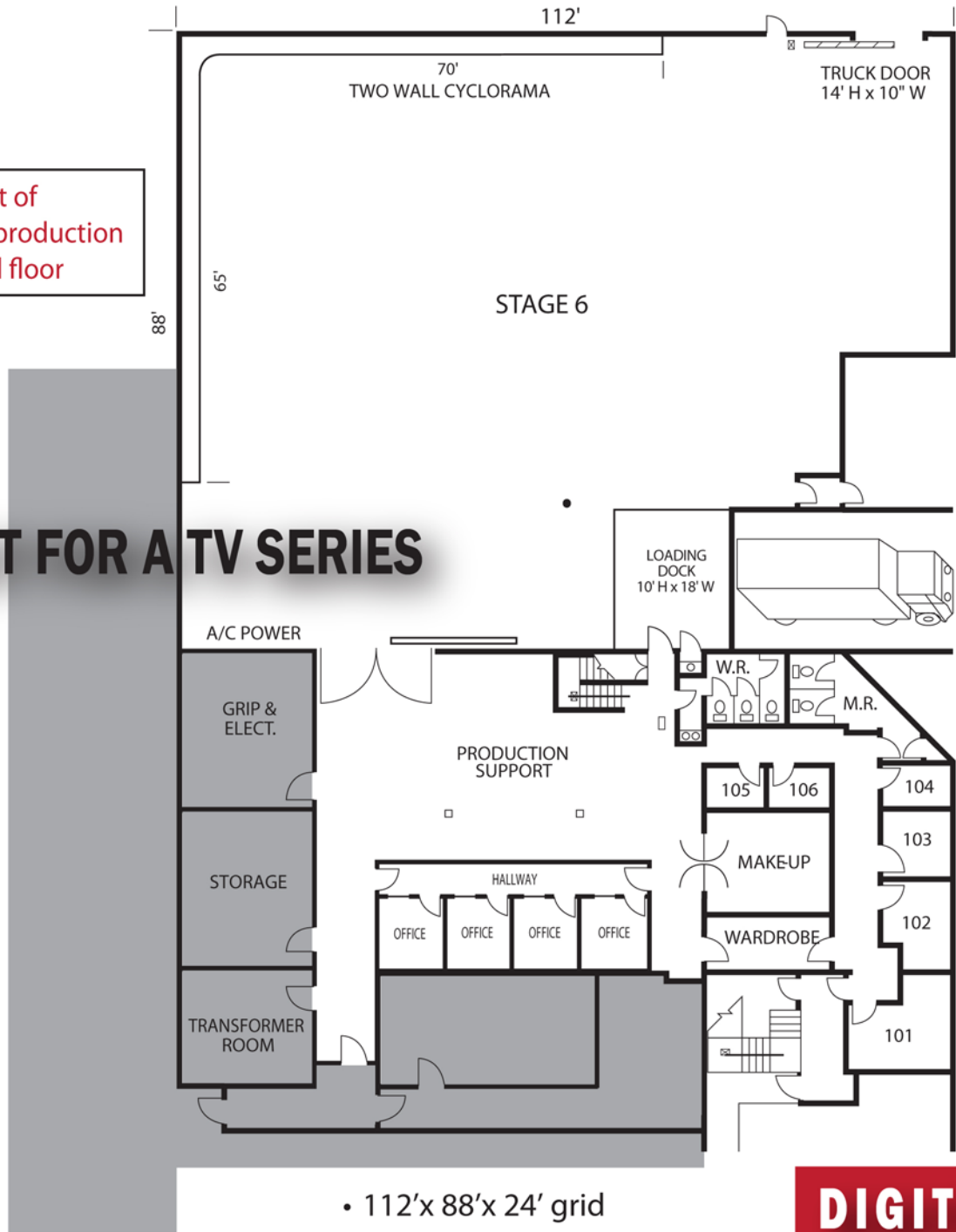
- 30'x 30'x 16' grid
- 900 square feet total
- Three wall Cyclorama (28'x 10'x 8'x 15')
- 600 amps of stage power
- Digital phone system
- Wireless Internet



• 6,000 square feet of air conditioned production space on second floor

**PERFECT FOR A TV SERIES**

stage 6



**DIGITAL**

- 112'x 88'x 24' grid
- 16,200 square feet total
- 9,800 square feet of stage space
- Two wall Cyclorama (65' x 70' x 24')
- 3,400 square feet (14' high) production support
- 3600 amps of stage power
- Separate make-up & dressing room
- Production offices with Digital phone system
- Loading dock 10' high x 18' wide
- Drive-in truck door 14' high x 10' wide
- 41 reserved parking spaces

stage 1 100' x 100' x 18'-25'

stage 2 50' x 80' x 16-18'

stage 3 96' x 93' x 23'

stage 4 70' x 70' x 24'

stage 5 30' x 30' x 16' **NEW**

**stage 6 112' x 88' x 24'**

stage 7 116'x 96'x 22-25'

“AT THE SAME LOCATION FOR OVER 28 YEARS.”

# THE RIGHT PLACE

- 116' x 96' x 22'-25' grid'
- 18,725 square feet total
- 11,232 square feet of stage space
- Pipe grid varies from 22'-25'
- 3600 amps of stage power
- 3,450 square feet of production support space
- Separate make-up & dressing room
- Star dressing room (optional) with shower & hair sink
- Production offices w/ electronic phone system
- Outdoor patio deck
- 2 Drive-in truck doors each 14' high x 12' wide
- 65 reserved parking spaces
- Wireless Internet and Digital Phone system

stage 1 100' x 100' x 18'-25'

stage 2 50' x 80' x 16-18'

stage 3 96' x 93' x 23'

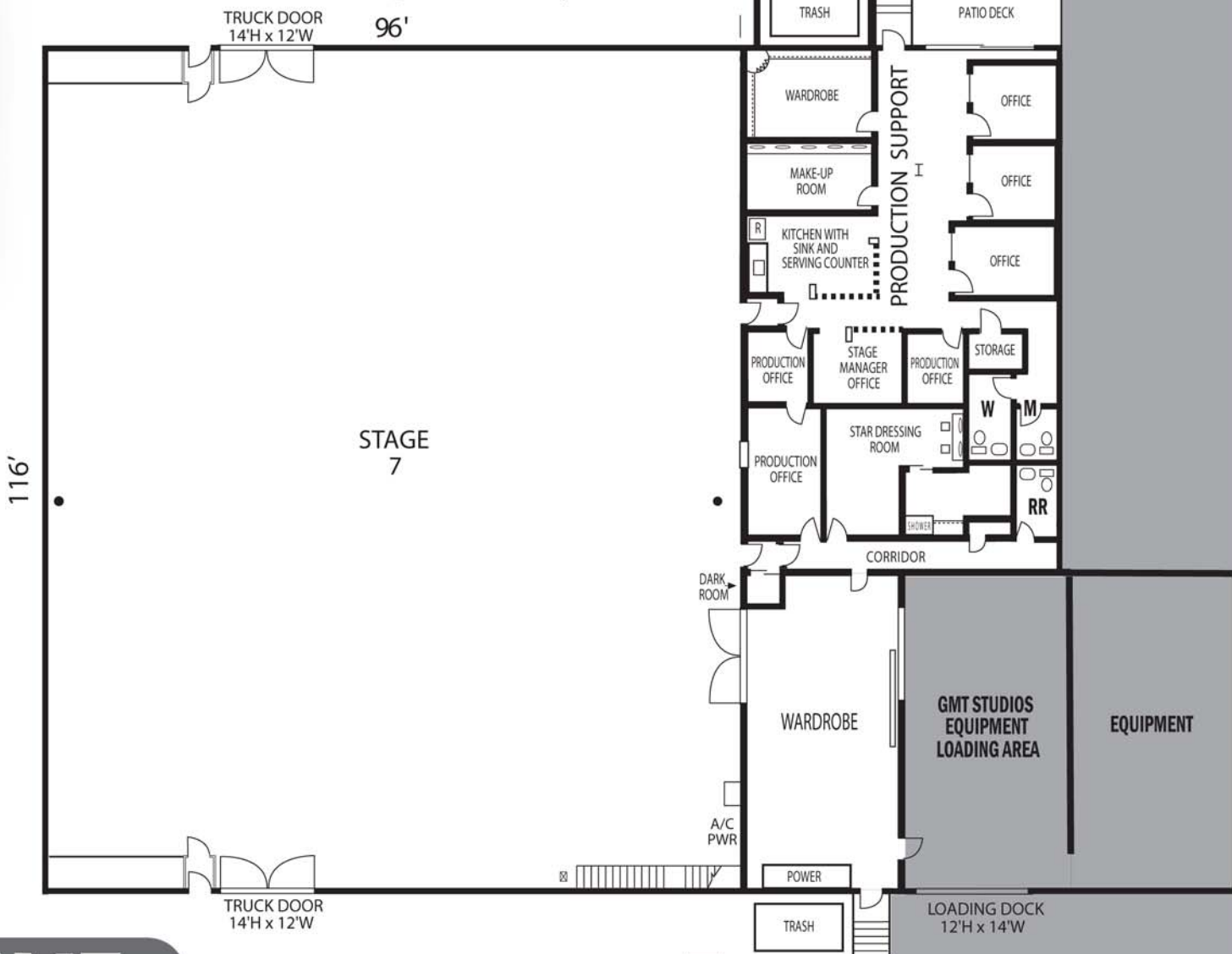
stage 4 70' x 70' x 24'

stage 5 30' x 30' x 16' NEW

stage] 6 112' x 88 x 24"

stage 7 116' x 96' x 22-25'

## NEW EDITING SUITES







FEATURE FILM  
VISUAL EFFECTS  
& ANIMATION



2

3

1

4



2

3

1

4

INTERACTIVE MEDIA  
& VIDEO GAMES



IN ASSOCIATION WITH



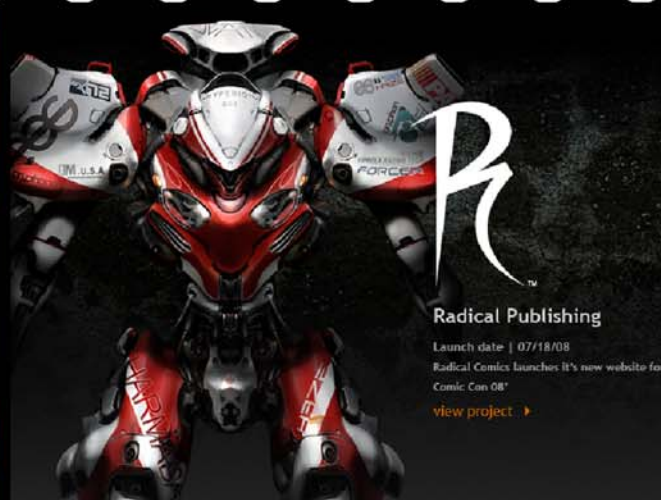
sandman studios®

1



4

# TELEVISION VISUAL EFFECTS



# 30

FOR **30** YEARS, CLIENTS AND MAJOR PRODUCTIONS INCLUDE "RIGHTEOUS KILL" WITH ROBERT DENIRO AND AL PACINO, "GONE BABY GONE" DIRECTED BY BEN AFFLECK, "THE CHRISTMAS" TOM HANKS, JACKIE CHAN, TWO "KILL BILLS", AFTER THE SUNSET" WITH PIERCE BRONSAN AND SALMA HAYEK, "TEQUILA SUNRISE" STARRING MEL GIBSON, 3 SEASONS OF THE ABC FAMILY SHOW, "LINCOLN HEIGHTS", "PRIVATE PRACTICE", AND THE HIT SERIES "HOUSE". OTHER CREDITS INCLUDE: FORD, BURGER KING, "BROKEN ARROW" STARRING JOHN TRAVOLTA, MC DONALDS, "BLADE 1 & 2", MATTEL, AT&T, GARTH BROOKS, TARGET, WILL SMITH, THE RED LOBSTER, "THE JUDDS", KEVIN SPACEY, "24", MEG RYAN, "PRIME TIME", ED HARRIS, IKEA, NIKE, MTV, "MINORITY REPORT", GENE HACKMAN, NFL, FOX SPORTS, ADAM SANDLER, "WAG THE DOG" STARRING DUSTIN HOFFMAN, "ARREST AND TRIAL", DENZEL WASHINGTON, 'JAMES DEAN AMERICAN LEGEND", VAL KILMER, CHEVROLET, KFC, BLACK CROWES, GEORGE HARRISON, RINGO STARR, JC PENNY, NATALIE COLE, STEVIE NICKS, "GODZILLA", JODIE FOSTER, "SERIOUS MOONLIGHT", "LIFETIME", BILLY CRYSTAL, "DISNEY PLAYHOUSE", JENNIFER LOPEZ, OUTBACK STEAK HOUSE, HOME DEPOT, THE EAGLES, SPRINT, CARL'S JR, BARBIE, JIM CARREY, "SEINFELD", "LA STORY", JANE FONDA, MIKE MYERS, MICHELLE PFEIFFER, TOMMY LEE JONES, CHRISTIAN SLATER, "THE USUAL SUSPECTS", DENNIS QUAID, "A&E NETWORKS", MICHAEL MANN'S HBO SERIES "LUCK" STARRING DUSTIN HOFFMAN, AND GMT STUDIOS RECEIVED A "TELLY AWARD" FOR "TO END ALL WARS" STARRING KIEFER SUTHERLAND AND ROBERT CARLYLE.



# GMT STUDIOS

# 30

GMT FX WILL CREATE YOUR DREAMS. GMT FX IS A FULL SERVICE CREATIVE AGENCY IN ASSOCIATION WITH SANDMAN STUDIOS AND SPECIALIZES IN CG ANIMATION, VISUAL EFFECTS PRODUCTION AND INTERACTIVE MULTIMEDIA WITH THE ABILITY TO DELIVER EVERYTHING FROM INITIAL CONCEPT AND DESIGN TO DEVELOPMENT, PRODUCTION, POST-PRODUCTION, INTEGRATION AND IMPLEMENTATION OF MARKETING AND WEB MATERIALS. HERE ARE A FEW PROJECTS THAT THE SANDMAN STUDIOS TEAM HAS BEEN A PART OF OVER THE PAST **20** YEARS:

A SIMPLE WISH, ADVENT RISING, AIR FORCE ONE, ALLY McBEAL (TV), **ANTZ**, AN AMERICAN WEREWOLF IN PARIS, APOLLO 13, ARMAGEDDON, ARRIVAL **ARTIFICIAL INTELLIGENCE A.I.**, BAGGER VANCE, **BATMAN AND ROBIN**, BATMAN FOREVER, BLADE 1 & 2, BLOOD RAYNE, CAPITAL PUNISHMENTS, CHARLOTTE'S WEB, COMATOSE GRANDMA, **CON AIR**, DANTE'S PEAK, DIABLO II, DINOTOPIA, ERASER, EVERWOOD (TV), EVOLUTION, EXECUTIVE, THE CRAYON BOX, VIP, DECISION, **FACE / OFF**, FLUBBER, FOREVER STRONG, FRANK McCLUSKY, P.I., FROM DUSK TIL DAWN, GEORGE OF THE JUNGLE, **GODZILLA**, HISTORY, CSI NY, CHANNEL: THE UFO FILES, HOLLOWMAN, HOUSE (TV), IN SEARCH OF THE PARTRIDGE FAMILY, **INDEPENDENCE DAY**, JOE'S APARTMENT, LEMONY SNICKET, LION KING, LOCH, LOVEWRECKED, MINORITY REPORT, MISSION IMPOSSIBLE, MISSION IMPOSSIBLE 2, OUTLAW TRAIL, PASSAGE TO ZARAHEMLA, XENA (TV), PEACE MAKER, **PIRATES OF THE CARIBBEAN: DEAD MAN'S CHEST GAME**, **PUSHING DAISIES (TV)**, **RACE TO WITCH MOUNTAIN**, RALLY FUSION, RED RIDING HOOD, SCOOBY DOO 2, **SHREK**, SOUL REAVER 2, SPAWN, SPECIES, SPIDERMAN, SPIDERMAN 2, STAR TREK INSURRECTION, STAR TREK VOYAGER, STARSHIP TROOPERS, STUART LITTLE 2, TENCHU 2, THE CUSP, THE FIFTH ELEMENT, **THE GAME PLAN**, THE MEXICAN, THE ROCK, THE SANTA TRAP, THE TERRIBLE TOOTH, THE X FILES MOVIE, TITANIC, TRUE LIES, UNOCCUPIED MINORS, YOU'VE GOT MAIL, WHITE WINGS, DISCOVERY CHANNEL, OUTBACK STEAKHOUSE, REDEMPTION OF SARAH CAIN, FUNN NETWORKS, XL 411, WACKY WORLD STUDIOS, **FRINGE (TV)**, LADY MAGDALENE'S, REDBELT, EA, LIVE FREE OR DIE HARD, TALLADEGA NIGHTS, BLADE, MISSION IMPOSSIBLE 3, ZATHURA, LOST (TV), MORTAL COMBAT, BLADE TRINITY, ALIAS (TV), MIMIC, ENTERPRISE, MR. STERLING, 24 (TV), ELF, FINAL DESTINATION 2, ERIC GAMES, HERCULES (TV), DON'T SAY A WORD, **DOWN WITH LOVE**, ADRENALINE RUN, **TWO CAN PLAY THAT GAME**, TALES FROM THE HOOD, THE MAN SHOW, MANHATTAN, AZ, WITHOUT PANTS, THE DREAM TEAM, PROFILER, PACIFIC BLUE, SWEET VALLEY HIGH, LAND'S END, SILK STALKINGS, **COP FILES**, RENEGADE, ACTIVISION, MIDWAY GAMES, DINATOPIA, TAKEN. SANDMAN HAS EARNED NUMEROUS AWARDS FOR THERE WORK INCLUDING: 10 TELLYS, 15 HORIZON AWARDS, 6 COMMUNICATORS AWARDS, 2 DAVEY AWARDS, 2 W3 AWARDS, AND MANY OTHERS OF THE YEARS.



# GMT



SEVEN SOUND STAGES,  
THREE CYCS, ONE PERMANENT GREEN,  
VFX FOR FEATURES, TELEVISION, AND COMMERCIALS,  
PLUS A LIGHTING AND GRIP RENTAL DEPARTMENT.  
ON THE WEST SIDE SERVING THE HOLLYWOOD  
ENTERTAINMENT INDUSTRY FOR MORE THAN **30** YEARS.

**GMT STUDIOS**



**GMT** 

[GMTSTUDIOS.COM](http://GMTSTUDIOS.COM)

5751 BUCKINGHAM PARKWAY, CULVER CITY, CA 90230 P 310.649.3733 F 310.216.0056